

GLCC SCHOOL HOLIDAY PROGRAMME APRIL 2019

WEEK ONE

Mon 15 April

WORKSHOP:



Zinefest

We are looking for our own up and coming magazine publishers. We have some lovely ladies from Zine Fest coming into the centre to teach your kids all about making their own mini magazines.

Tues 16 April

TRIP DAY:



Bounce and Beyond

Your kids will be bouncing down the street to uptown bounce and back. Followed by some arts and crafts at the centre.

Wed 17 April

TRIP DAY:



Butterfly Creek

An off site trip spent at butterfly creek. Your child will be immersed in the tropical butterfly house with a few stops through Dinosaur kingdom, the farm animal enclosure and so much more.

Thurs 18 April

Art Exploration



A day filled with mess and excitement finding your child's inner Picasso. Your child will be exploring the world of art through different materials being used throughout the day.

Fri 19 April

Easter Friday



Sorry WE'RE
CLOSED

WEEK TWO

Mon 22 April

Easter Monday



Sorry WE'RE
CLOSED

Tues 23 April

Kids Ninja Warrior



A day filled with competitions and obstacle courses around the centre. Followed by some arts and crafts of their own.

Wed 24 April

TRIP DAY:



Taste of Italy

A day spent at Ponsonby Pane & Vino's, where your children will be creating their own Italian dish to eat!

Thurs 25 April

Anzac Day



Sorry WE'RE
CLOSED

Fri 26 April

Future Filmmaker



Do you have a young actor, director or maybe a writer? A day filled immersed in exploring the world of film where your child will be creating their own movies.

Programme Fees Per Child

Early pick up (8am-3pm): \$40 per day

Full day (8am-5.30pm): \$50 per day

Workshop Early pick up (8am-3pm): \$45 per day

Workshop Full day (8am-5.30pm): \$55 per day

Trip Days \$60 - no early pick up

We close promptly at 5.30pm & late fees of \$1 per minute per child will be incurred if you arrive late to collect your child/ren.

Please refer to the Parent Contract Information for our fee/cancellation policy.

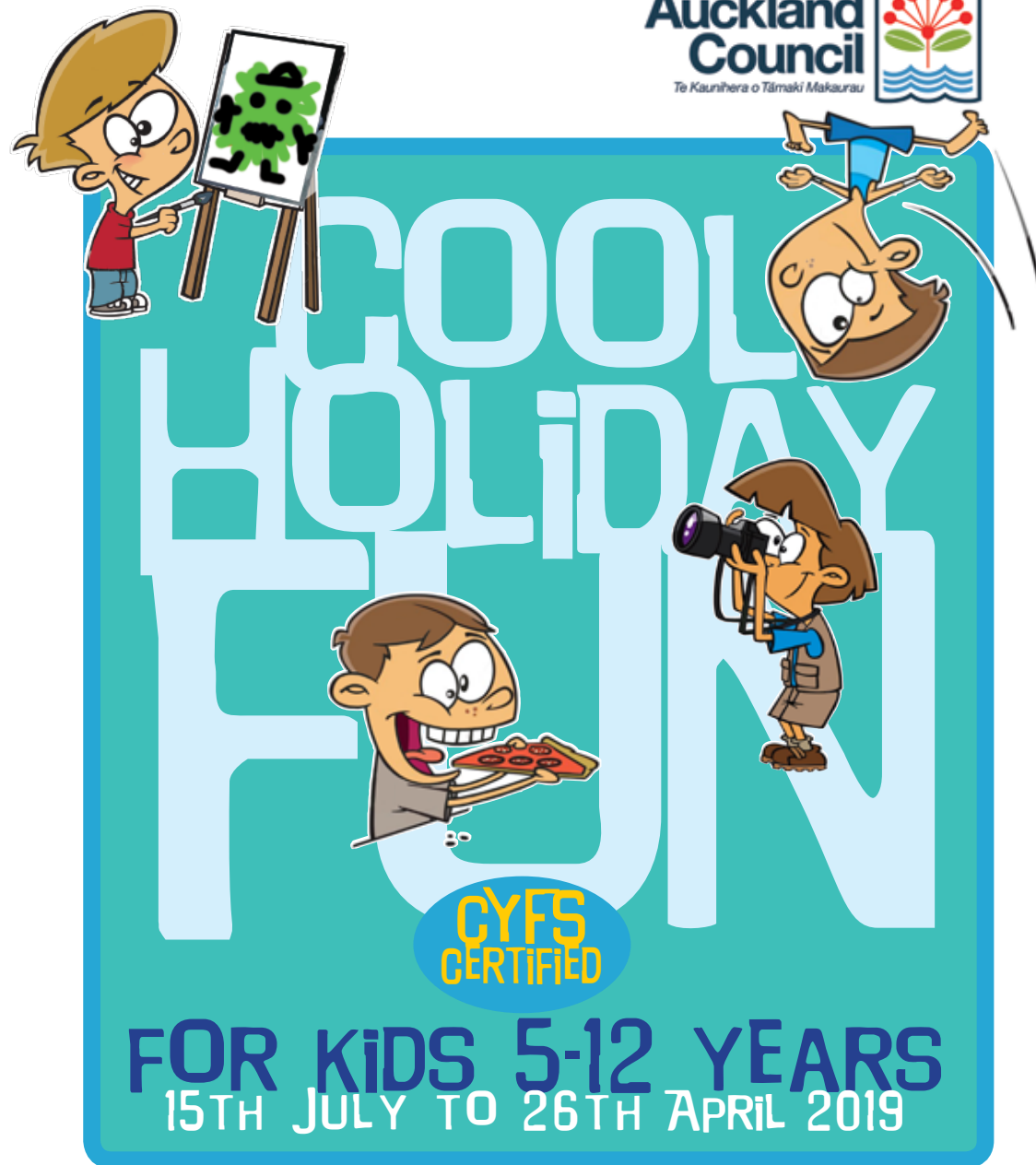
Your booking will be confirmed upon receipt of a completed enrolment form and fees.

We accept WINZ subsidy bookings and have the relevant forms available here for you.

**Proudly supported by the
Ministry of Social Development
and Auckland Council**



510 Richmond Road OFFICE Mon-Fri 9am-4.30pm PHONE 378 4908
EMAIL accounts@greylynn.org.nz WEB www.greylynn.org.nz



BUTTERFLY creek™



ZINEFEST